

Links Report – February 12, 2026

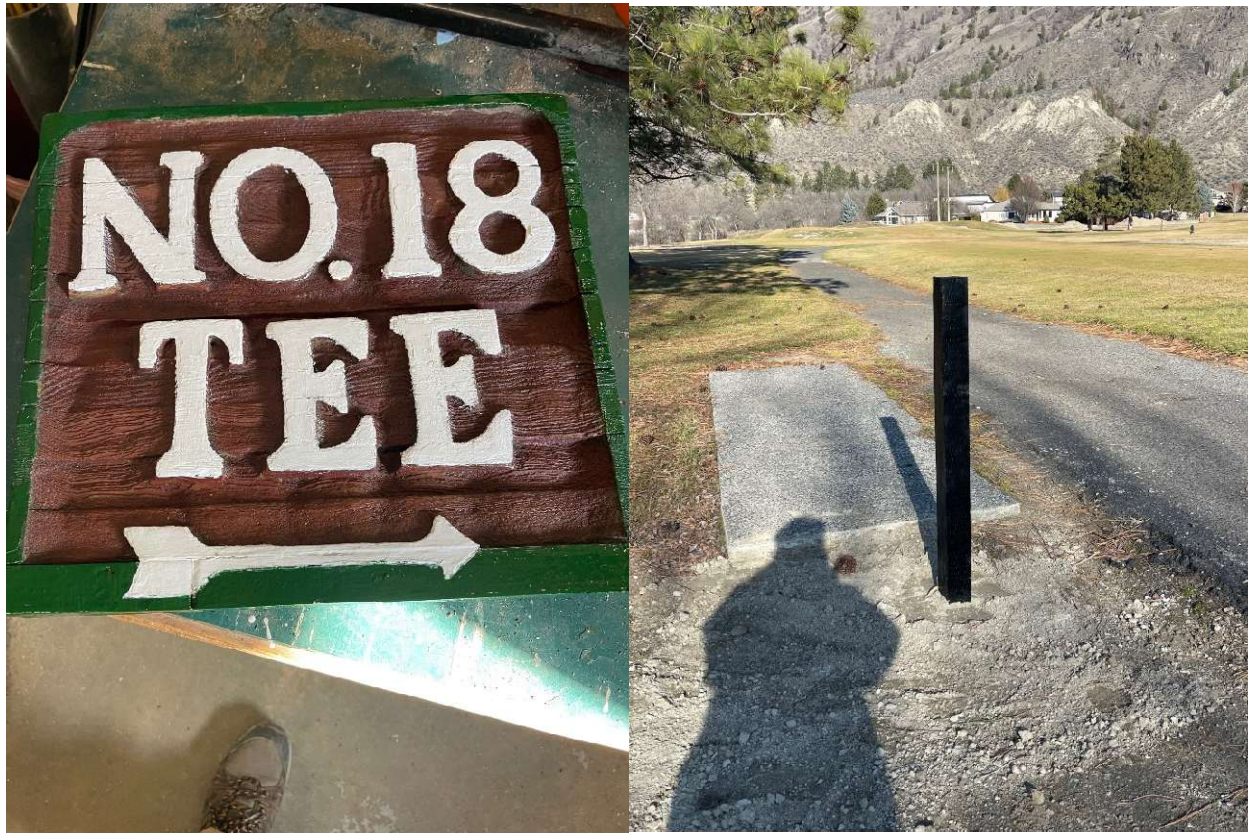
As the Links Crew prepares for the upcoming 2026 golf season here at Rivershore Golf Links, this report is generated to update our community members on what the few staff members employed over the winter months have been up to recently. Speaking of the upcoming golf season, our opening date is still to be determined but rest assured that when the weather allows the Links Crew will have the course ready for play. There is a colder trend forecasted over at least the next couple of weeks, but when things warm up enough out there we look forward to welcoming back our passionate golfers. Stay tuned!

Accessories/Signage

Jason & Marvin have been hard at work, re finishing accessories throughout the winter. This means giving all our wooden golf course accessories a fresh coat of paint, sanding off the old paint before a fresh coat can be applied. Previously they had finished the rope stake posts, and this past month they completed the tee markers.

They are also in the process of refreshing some of the “hole number” signs out on the golf course (Hole #18 arrow sign for example), along with installing a sign post on Hole #2 next to the bench pad that was installed last year.





Range Tee Project

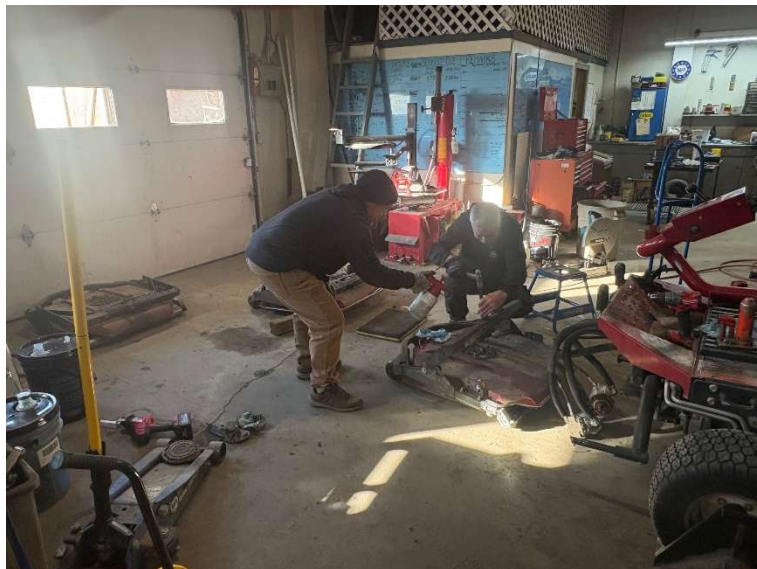
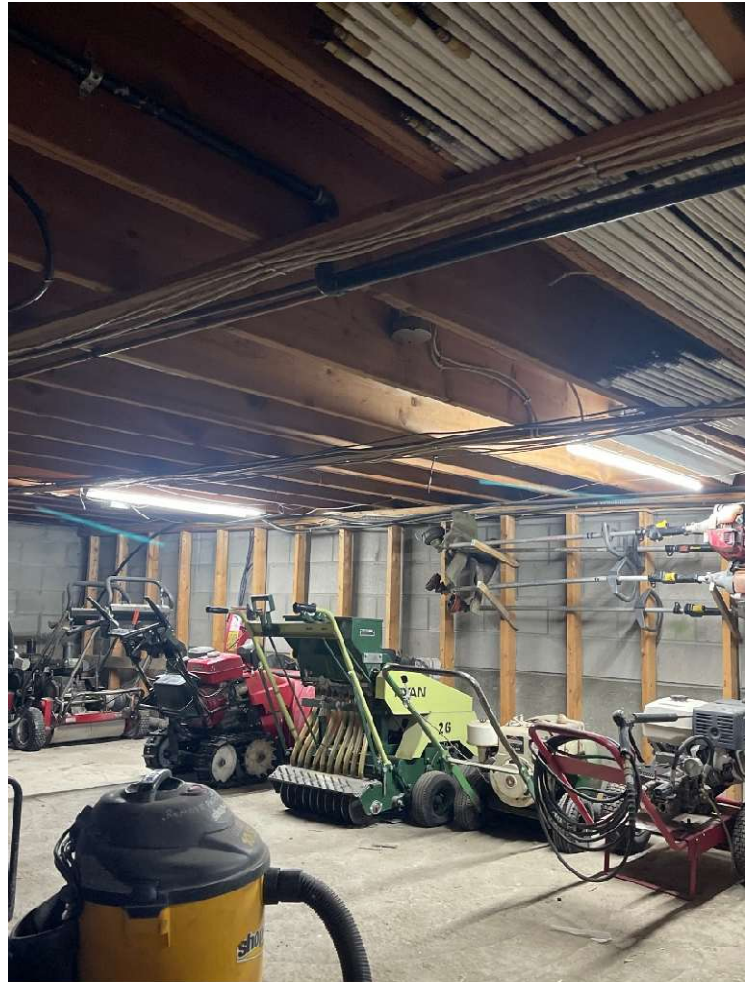
The Links Crew are in the early stages of installing a synthetic turf range tee mat on our existing driving range tee box. The current range tee box is constructed with Kentucky bluegrass, which is the incorrect type of grass for a tee box. As such, it fails to recover from all the abuse it endures throughout the golf season. The current range tee box also requires a large labour allocation to fill divots in attempt to sustain it. The new synthetic range tee box will be a high-quality synthetic material that will allow our golfers to practice as much as they desire, while greatly reducing the labour allocation demand in that area. This labour will now be freed up to complete other tasks elsewhere on the property and help to contribute to the goal of continuous improvement in overall golf course conditions. The new range tee mat will be installed parallel to the netting at the back of the driving range to minimize the number of range balls travelling towards the road and Hole #1.



Maintenance Shop Tasks

Jason & Marvin installed new lighting in the crawl space area of the maintenance shop. The visibility in this area has been greatly improved as a result.

Mick continues to service our fleet of equipment, ensuring that all our machines are mechanically ready to take on the upcoming golf season. Jason & Marvin lend Mick a helping hand, if necessary, to get tasks completed as efficiently as possible. A team mindset is a key aspect to foster for a productive and successful turf care maintenance crew, and these two individuals lead by example in that regard. If you see Jason or Marvin working hard out on the course this season, don't be shy & feel free to thank them for all they do to help Rivershore Golf Links succeed.



Opening day is... coming soon!